




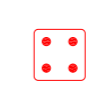







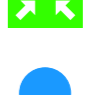

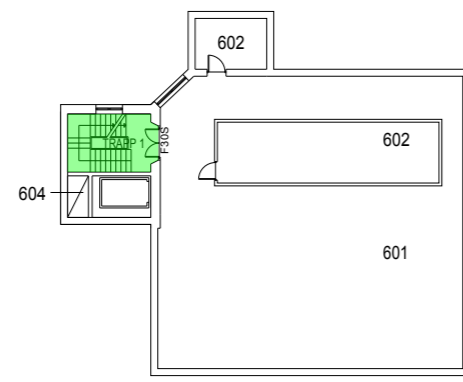


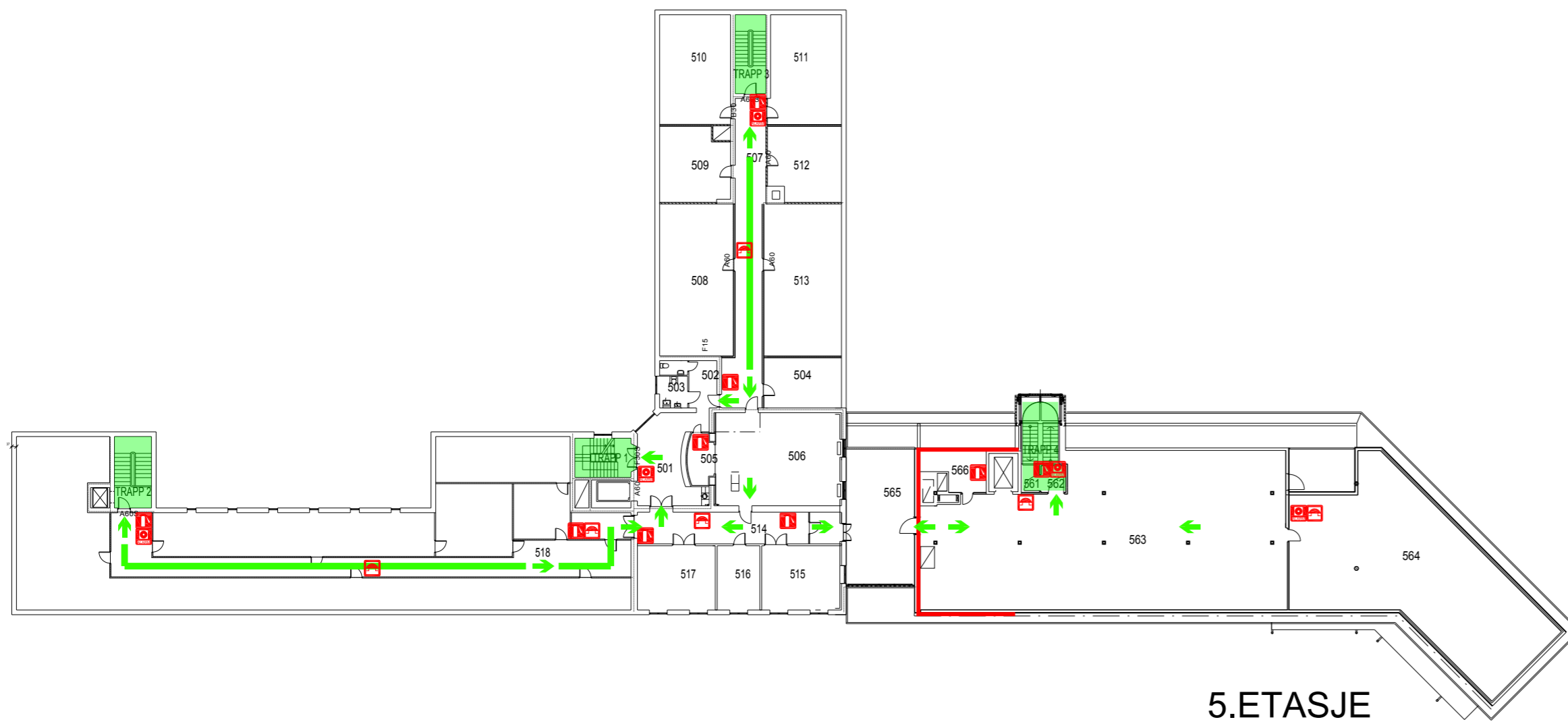
ORIENTERINGSPLAN

TEGNINGSFORLARING

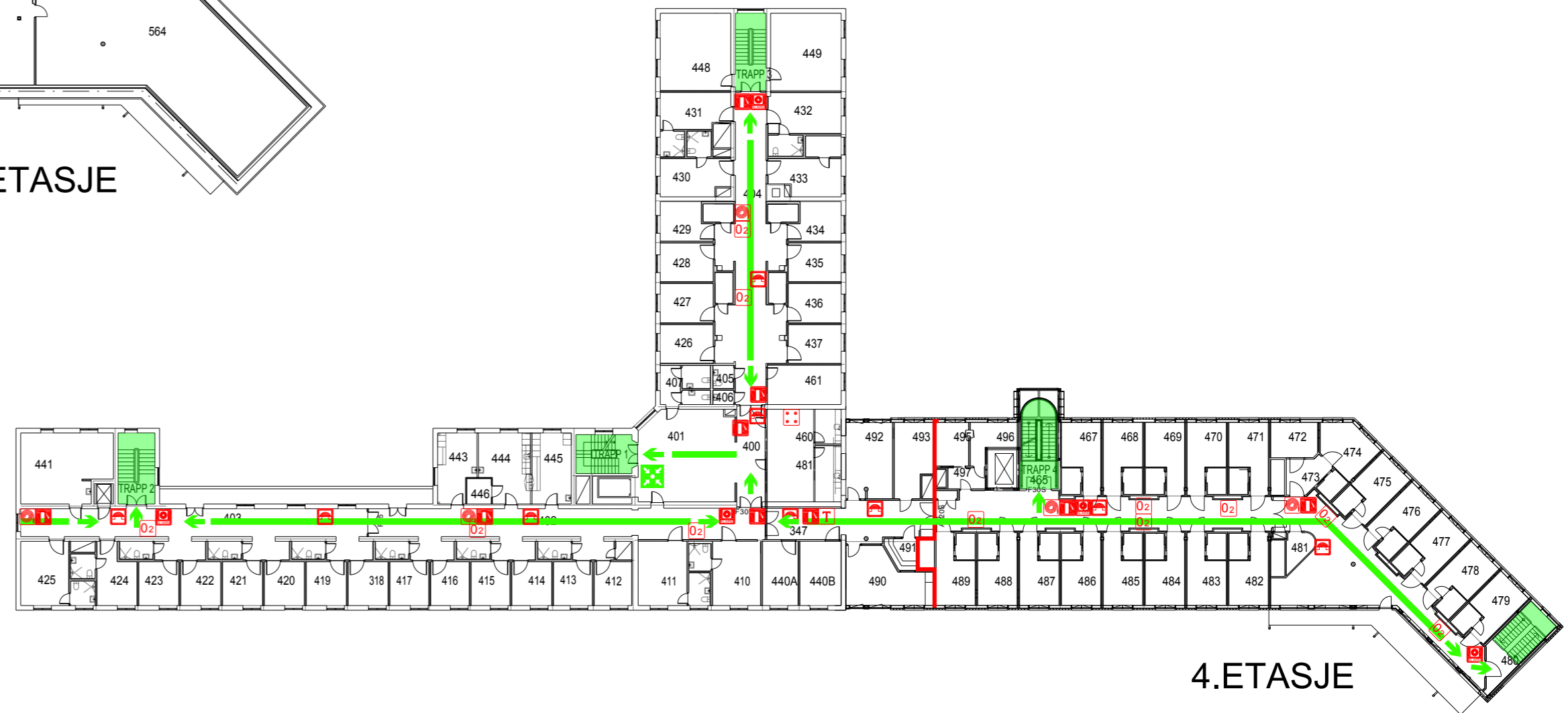
-  Rømningsvei, rømningsretning.
-  Brannvegg /-dekke, REI-M 120
-  Brannslange
-  Slukkeapparat
-  Brannmelder
-  Brannkøkke
-  Brannsentral
-  Røyklukeutløser
-  Nøkkelskap
-  Propanskap
-  Stengeventil Propan
-  Stengeventil Oksygen
-  Bryter Oljefyr
-  Mateplass
-  Her er du nå



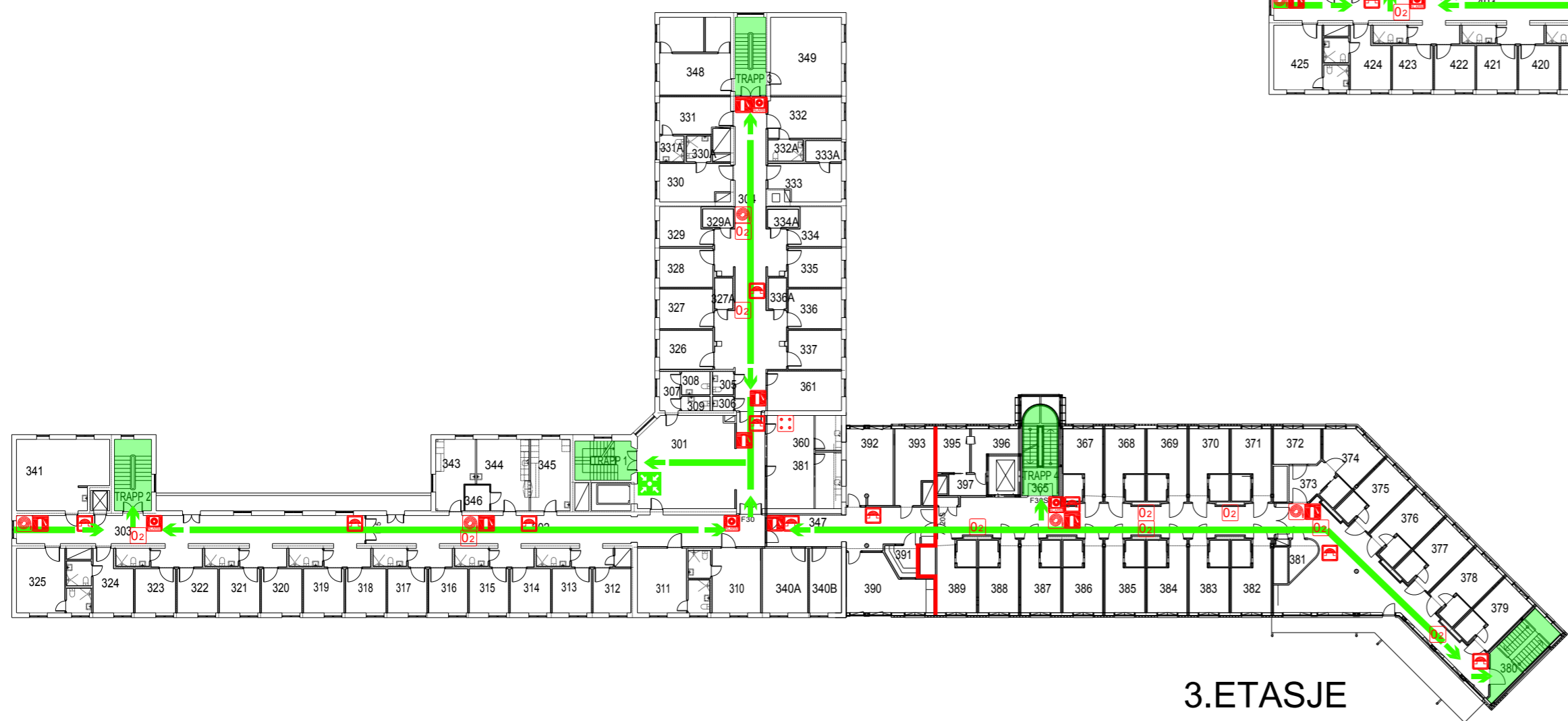
TEKNISK LOFT



5.ETASJE



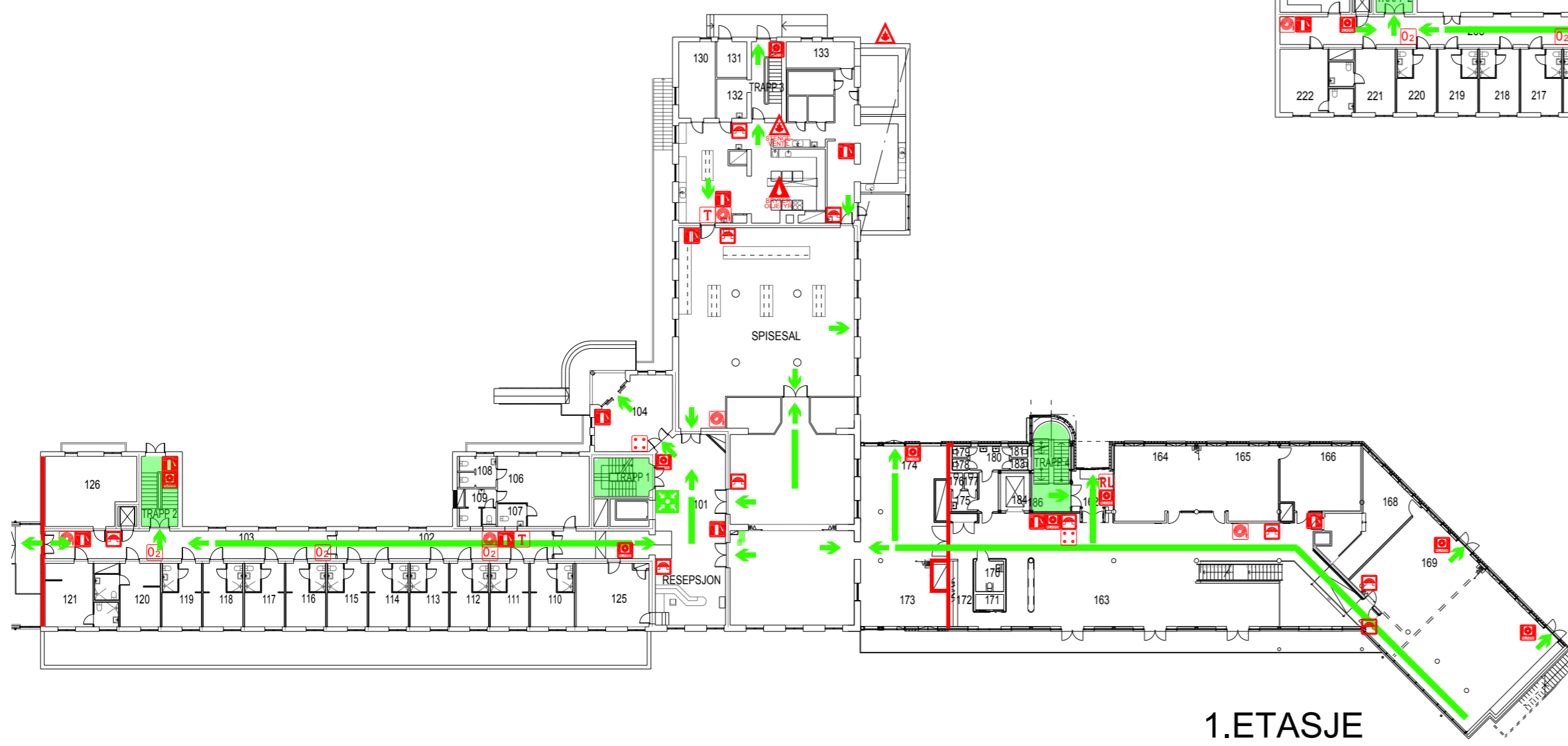
4.ETASJE



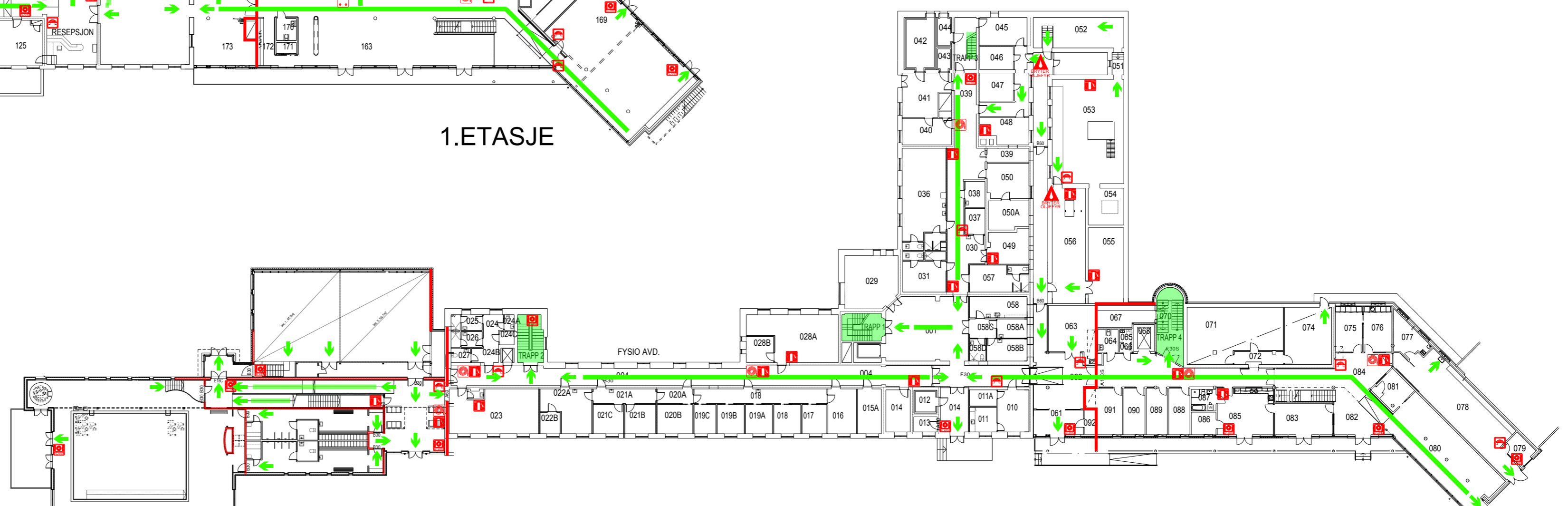
3.ETASJE



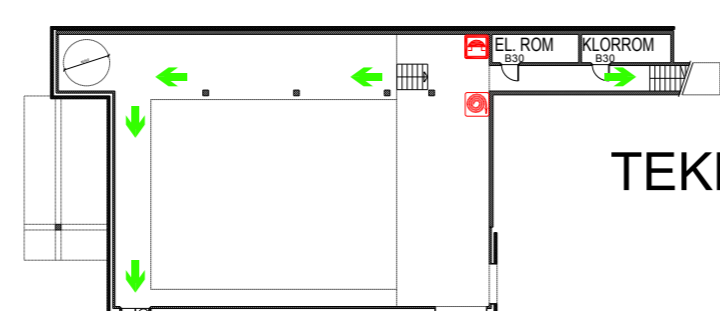
2.ETASJE



1.ETASJE



U.ETASJE



TEKNISK KJELLER

Dato: 31.05.2013